



FEATURES

- 1.5" Low Profile, 4"X6" Footprint
- Universal Input : 90 ~ 264Vac
- Active PFC Meets EN61000-3-2
- EMI Meets CISPR/FCC Class B
- High Efficiency at 80% Typical
- Current Share
- Remote Voltage Sense
- AC OK Signal (Logic High)
- DC OK Signal (Logic High)
- PS ON/OFF Remote Control
(Inhibit PSU by adding Logic High)

NOTE

- 1: Optional function can be added when ordering:
Top Cover with Fan (when forced air is needed)
- 2: Add a 0.1uF ceramic capacitor and a 47uF E.L. capacitor to output for Ripple & Noise measuring @20MHz BW.
- 3: Voltage accuracy is set at 60% rated load and 25°C Ta.
- 4: Line regulation is measured from High Line to Low Line with rated load.
- 5: Load regulation is measured at 60%±40% rated load.
- 6: Dimensions tolerance : +/- 1mm.
- 7: Connectors:
CN1(AC Input) : Molex 5273-05A or equivalent
CN2(DC Output) : Molex 38700-7504 or equivalent
CN6(Signals) : Molex 70247-10 or equivalent
CN3,CN4,CN5(FAN) : Molex 5045-02A or equivalent

SPECIFICATIONS

Input Characteristics

AC Input Voltage	90 ~ 264Vac
Frequency	47 to 63Hz
Inrush Current	60A Max.
EMI	CISPR/FCC Class B
Isolation	Input to output = 4,242Vdc
Leakage Current	3.5mA max.

Output Characteristics

Total Rated Output Power	200W (with 30CFM air flow or optional fan)
Current Share	Single wire current sharing
Remote Voltage Sense	Compensates for wire voltage drop
Hold-up Time	16mS typ.
Over Voltage Protection	Recycle AC input to restart
Over Temperature Protection	Auto Recovery
Short Circuit Protection	Auto Recovery

Environmental Characteristics

Operating Temperature	0 ~ 70 degrees C 50~70 C with 2.5%/ degrees C derating PSU will be in thermal protection for exceeding the rated power output or the operating temperature
Storage Temperature	-20 ~ 85 C

Mechanical Outline

Standard U Frame	150mmx100mmx38.1mm (5.91"*3.94"*1.5")
With Optional Fan	150mmx101.6mmx58.5mm (5.91"*4"*2.3")

Model	Output Voltage	Output Current (A)		Ripple & Noise	Voltage Accuracy	Line Reg.	Load Reg.
		Rated	Min.				
AC200-033	+3.3V	40.0	0	1%	±1%	±1%	±1%
AC200-050	+5.0V	40.0	0	1%	±1%	±1%	±1%
AC200-120	+12V	16.7	0	1%	±1%	±1%	±1%
AC200-150	+15V	13.4	0	1%	±1%	±1%	±1%
AC200-180	+18V	11.2	0	1%	±1%	±1%	±1%
AC200-240	+24V	8.4	0	1%	±1%	±1%	±1%
AC200-280	+28V	7.2	0	1%	±1%	±1%	±1%
AC200-300	+30V	6.7	0	1%	±1%	±1%	±1%
AC200-360	+36V	5.6	0	1%	±1%	±1%	±1%
AC200-480	+48V	4.2	0	1%	±1%	±1%	±1%

Typical @25°C, 230Vac and 60% rated load, unless otherwise specified.

DRAWINGS: (Preliminary)

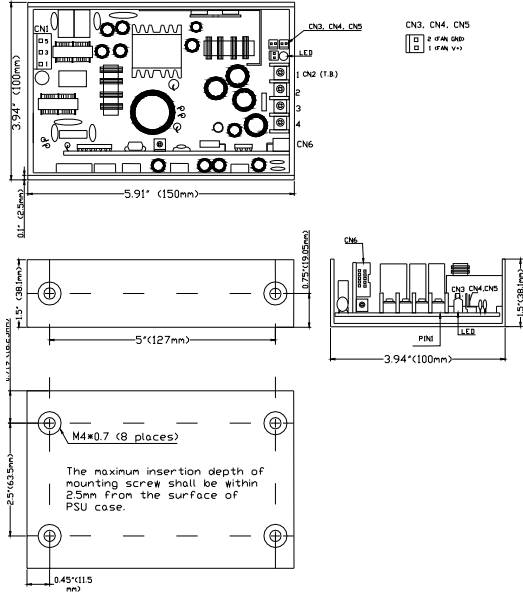


Fig. 1. Mechanical Outline of AC200
 Unit: inch (mm)

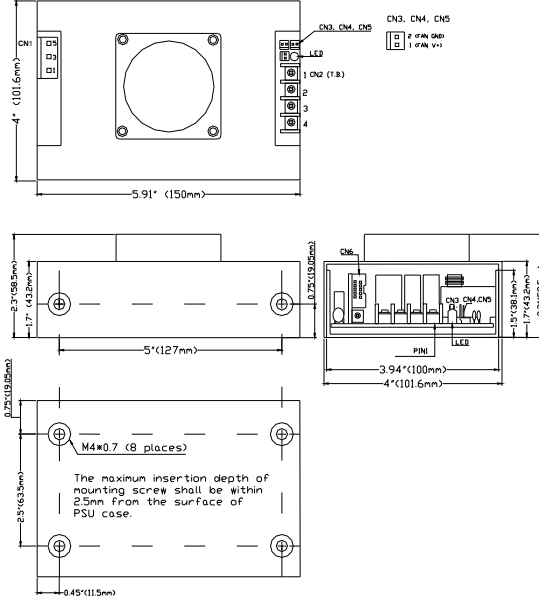


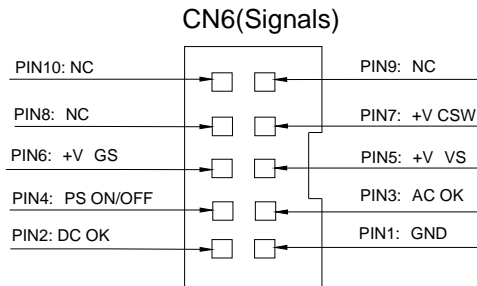
Fig. 2. Mechanical Outline of AC200-F (With Optional Fan)
 Unit: inch (mm)

PIN CONNECTION:

CN1 (AC Input)	
PIN NO.	ASSIGNMENT
1	Earth Ground
2	NC
3	Neutral
4	NC
5	Line

CN2 (DC Output, T.B.)	
PIN NO.	ASSIGNMENT
1	+V
2	+V
3	PWR GND
4	PWR GND

CN3,CN4,CN5 (FAN Output)	
PIN NO.	ASSIGNMENT
1	+12V(FAN)
2	GND(FAN)



Note: VS means Remote Sense "+"

GS means Remote Sense "Return"

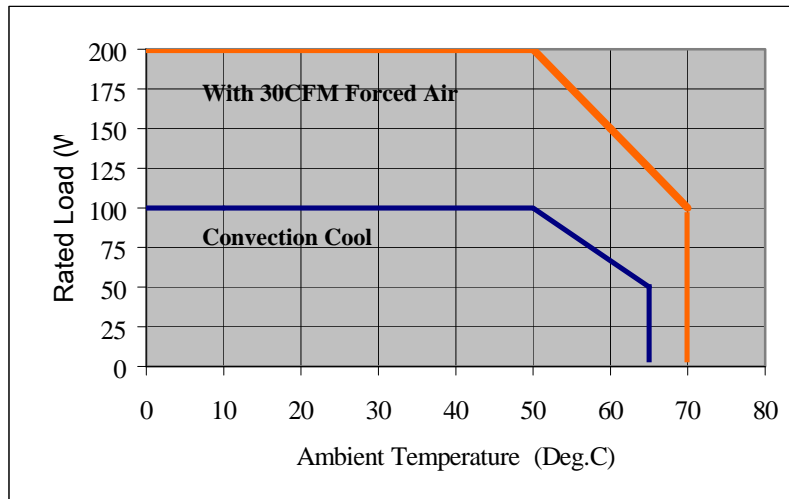


Fig. 3. Output Derating Curve